

**Open Market
Lowest Price, Technically Acceptable**

Request for Quotation

RFQ Number: USCA 25-00003

Request Date: 6/25/25

**Replace Failed Components on Annex 50-Ton Chiller – Unit B
Deep Clean Condenser Coil**

Quotes must be e-mailed to the below listed address by close of business day (*Friday, July 11, 2025*).

Submit a technical proposal describing your approach and project management in accordance with the SOW.

A fixed price award from this RFQ will be made based on the lowest priced, technically acceptable offer.

Quotes and questions concerning this RFQ should be submitted by email to:

dana_bethea@cadc.uscourts.gov no later than Thursday, July 3, 2025.

A site visit can be arranged by contacting Mike Gala at; (202) 216-7351 office / (202) 487-4454 mobile.

All services are to be performed at:

**E. Barrett Prettyman Courthouse
U.S. Court of Appeals
333 Constitution Ave., NW
6th Floor - Roof
Washington, DC 20001**

Sincerely,

Mr. Dana L. Bethea
Contracting Officer
dana_bethea@cadc.uscourts.gov
(202) 216-7297

Replace Failed Components on Annex 50-Ton Chiller Unit B & Deep Clean Condenser Coil


Date: June 25, 2025


Scope:

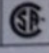
SCOPE OF WORK OVERVIEW: Replace failed components as necessary on Annex 50-Ton Chiller Unit 2 including, but not limited to, A and B side compressors, fan motors and blades, VFDs, TXV valve, relays, contactors, and other chiller components. Provide accessible exterior mounted liquid filter driers to each compressor (See Annex 50-Ton Chiller Unit 1 for guidance on desired configuration). Provide an electrical disconnect for unit. Test chiller system after repairs for proper operation by switching between Chiller Units 1 and 2. Chiller Unit 2 will serve as a redundant back up in case of Chiller Unit 1 failure.





30RAN050-11D1
0403F13856


Carrier
A United Technologies Company



MODEL 30RAN050-11D1				SERIAL 0403F13856				FACTORY CHARGE							
VOLTS AC		PH	HZ	RLA	LRA	REF RIG/ SYSTEM R-		22							
460		3	60	23.8	175			55 LBS		25.0 kg					
COMP								55 LBS		25 kg					
COMP															
DESIGN / TEST PRESSURE GAGE				HIGH	PSI	450	kPa	3102	LOW	PSI	278	kPa	1917		
FAN MOTORS QTY		VOLTS AC		PH	HZ	FLA		HP		kW OUT					
OUTDOOR 4		460		3	60	2.4		1.4		1.0					
OUTDOOR															
OTHER															
HEATERS															
POWER SUPPLY		460	VOLTS	3	PH	60	HZ	CKT	MIN CIRCUIT AMPS		MAX OVERCURRENT PROTECTION DEVICE AMPS				
PERMISSIBLE VOLTAGE AT UNIT		506	MAX	414	MIN	1		110.8			125				
CONTROL POWER SUPPLY		24	VOLTS	1	PH	60	HZ	AMPS	2			FUSE OR HACR TYPE CIRCUIT BREAKER			
MADE IN U.S.A.				CHILLER SYSTEM PER INSTALLATION INSTRUCTIONS				99NA504514 E							

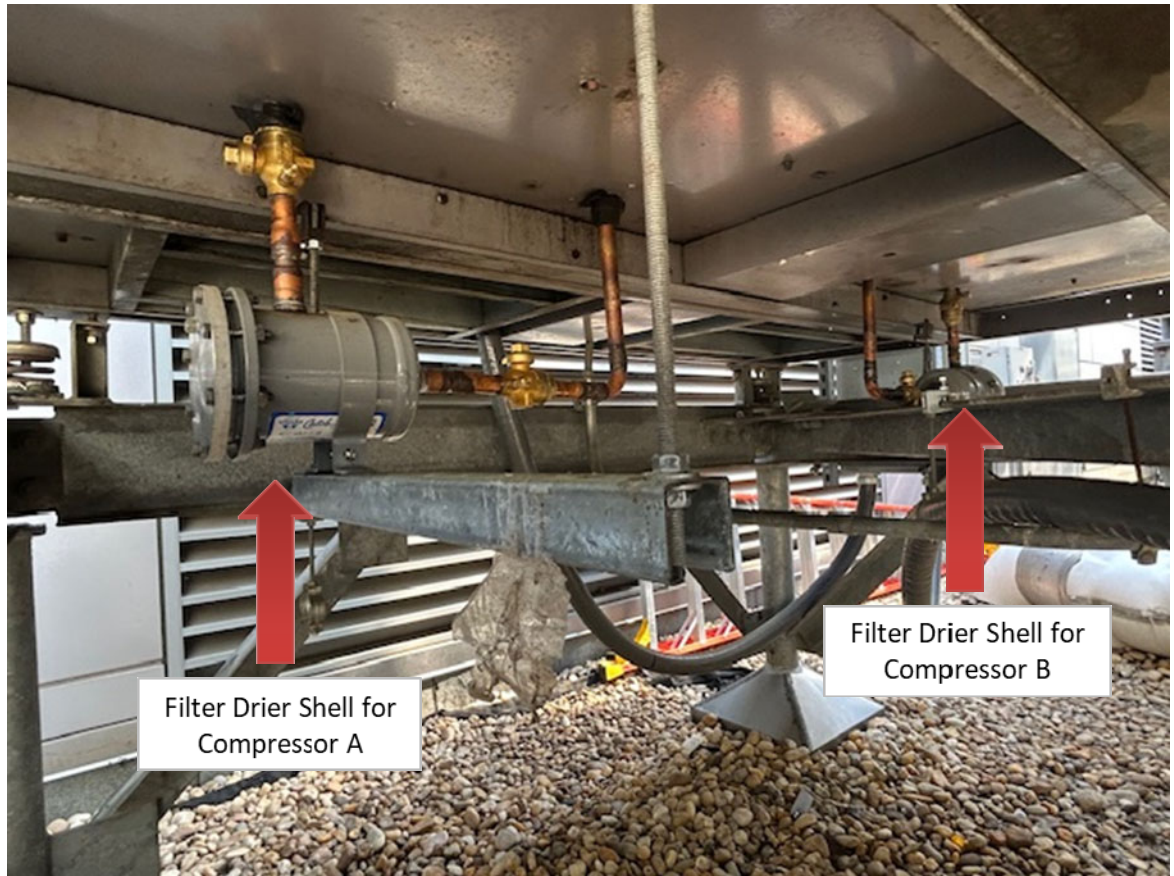




ETL LISTED
CONFORMS TO
UL STD 1995
CERTIFIED TO
CAN/CSA STD C22.2 NO. 236

Annex 50-Ton Chiller Unit 2 Details





3

Annex Chiller Unit 1 - Exterior Mounted Filter Drier Shells for Compressors A and B

4

Overhaul and upgrade, (1) Carrier (Model #30RAN055-E-611DT and Serial #043F13856) air cooled chiller located on the northeast corner of the annex roof.

5

Replace A and B side chiller compressors with Carrier compressors. Completely drain new compressors of mineral oil and replace with polyester oil (POC) and provide 407C refrigerant in compressors.

6

Provide the following for each refrigerant Circuit A and B on Chiller Unit 2: Sporlan removable core type drier shells; mounting brackets; two refrigerant ball valves per circuit. Inlet and outlet of each drier shell, and provide new piping from the original drier location to the new location underneath the chiller frame. See image

7

Check all refrigerant joints and valves for refrigerant leaks, repair or replace as necessary.

8

Check all electrical connections and replace electrical components as necessary.

9

Check crankcase heater operation and replace components as necessary.

10

Inspect all contactors and relays, replace as necessary.

11

Check condition of condenser fan blades and motors. Replace fan blades and motors as necessary.

12

Check condition of VFDs and replace as necessary.

13

Check accuracy of thermistors, replace if greater than $\pm 2^\circ \text{ F}$ (1.2° C) variance from calibrated thermometer.

14	Provide an electrical disconnect for the chiller unit.
15	The building manager will supply a hose at the penthouse that has to be carried to the roof through the access door by the contractor for the annual dry cooler coil cleaning.
16	Technician to use court owned hand held Carrier navigator instrument for diagnostic evaluations of the chiller. After use, return navigator instrument to the courts.
17	Deep clean condenser coil of debris with Carrier approved coil cleaner.
18	Test Chiller Unit 2 for proper operation.
19	Chiller Unit 2 will serve as a backup system if Chiller Unit 1 fails. Test both units for proper operation by switching cooling between the two units.

Terms:

1	The contractor must have received factory training on the units being serviced. Provide a copy of certificates showing successful training with proposals.
2	Work to be performed during business hours.
3	Coordinate with Mike Gala, at 202.216.7351
4	Provide proposal no later than.

Submit any questions to Dana Bethea at dana_bethea@cadc.uscourts.gov.

APPLICABLE JUDICIARY TERMS AND CONDITIONS

1. Clause B-5, Clauses Incorporated by Reference (SEP 2010)

This contract incorporates one or more clauses by reference, with the same force and effect as if they were given in full text. Upon request, the contracting officer will make their full text available. Also, the full text of a clause may be accessed electronically at this address:

<http://www.uscourts.gov/procurement.aspx>

(end)

2. The following judiciary clauses, that the Contracting Officer has indicated are applicable, are incorporated in this contract by reference:

- ☒ Clause 3-3 Provisions, Clauses, Terms and Conditions - Small Purchases (JUN 2014)
- ☐ Clause 3-175 Fair Labor Standards Act and Service Contract Act – Price Adjustment (Multiple Year and Option Contracts) (JUN 2012)
- ☐ Clause 6-20 Insurance – Work on or Within a Judiciary Facility (APR 2011)
- ☐ Clause 7-55 Contractor Use of Judiciary Networks (JUN 2014)
- ☐ Clause 7-65 Protection of Judiciary Buildings, Equipment and Vegetation (APR 2013)
- ☐ Clause 7-115 Availability of Funds (JAN 2003)

3. The following full text clauses are incorporated if the Contracting Officer has marked them as applicable (X):

- ☐ Clause 2-90C Option to Extend Services (APR 2013)

The judiciary may require continued performance of any services within the limits and at the rates specified in the contract. These rates may be adjusted only as a result of revisions to prevailing labor rates provided by the Secretary of Labor. The option provision may be exercised more than once, but the total extension of performance hereunder shall not exceed 6 months. The contracting officer may exercise the option by written notice to the contractor no later than _____ calendar days prior to the contract's current expiration date *[insert the period of time within which the contracting officer may exercise the option]*.

(end)

- ☐ Clause 2-90D Option to Extend the Term of the Contract (APR 2013)

(a) The judiciary may extend the term of this contract by written notice to the contractor no later than _____ calendar days prior to the contract's current expiration date *[insert the period of time within which the contracting officer may exercise the option]*; provided that the judiciary gives the contractor a preliminary written notice of its intent to extend at least _____ calendar days [60 days unless a different number of days is inserted] before the contract expires. The preliminary notice does not commit the judiciary to an extension.

(b) If the judiciary exercises this option, the extended contract shall be considered to include this option clause.

(c) The total duration of this contract, including the exercise of any options under this clause, shall not exceed _____ (months) (years).

(end)

SUBMISSION OF QUOTE AND EVALUATION OF OFFERS

1. The following judiciary provisions, that the Contracting Officer has indicated are applicable, are incorporated in this solicitation:

☒ Provision B-1, Solicitation Provisions Incorporated by Reference (SEP 2010)

This solicitation incorporates one or more solicitation provisions by reference, with the same force and effect as if they were given in full text. Upon request, the contracting officer will make their full text available. The offeror is cautioned that the listed provisions may include blocks that must be completed by the offeror and submitted with its quotation or offer. In lieu of submitting the full text of those provisions, the offeror may identify the provision by paragraph identifier and provide the appropriate information with its quotation or offer. Also, the full text of a solicitation provision may be accessed electronically at this address: <http://www.uscourts.gov/procurement.aspx>.

(end)

Solicitation Provisions Incorporated by Reference

☒ Provision 2-70 Site Visit (JAN 2003)

☐ Provision 2-85A Evaluation Inclusive of Options (JAN 2003)

☐ Provision 3-135 Single or Multiple Awards (JAN 2003)

Additional Solicitation Provisions

☒ Provision 4-1, Type of Contract (JAN 2003)

The judiciary plans to award a "Firm Fixed Price" type of contract under this solicitation, and all offers shall be submitted on this basis. Alternate offers based on other contract types will not be considered.

(end)

☒ Provision 3-5, Taxpayer Identification and Other Offeror Information (APR 2011)

(a) *Definitions.*

"Taxpayer Identification (TIN)," as used in this provision, means the number required by the Internal Revenue Service (IRS) to be used by the offeror in reporting income tax and other returns. The TIN may be either a social security number or an employer identification number.

(b) All offerors shall submit the information required in paragraphs (d) and (e) of this provision to comply with debt collection requirements of 31 U.S.C. 7701(c) and 3325(d), reporting requirements of 26 U.S.C. 6041, 6041A, and implementing regulations issued by the IRS. If the resulting contract is subject to the payment reporting requirements, the failure or refusal by the offeror to furnish the information may result in a 31 percent reduction of payments otherwise due under the contract.

(c) The TIN may be used by the government to collect and report on any delinquent amounts arising out of the offeror's relationship with the government (31 U.S.C. 7701(c)(3)). If the resulting contract is subject to payment recording requirements, the TIN provided hereunder may be matched with IRS records to verify the accuracy of the offeror's TIN.

(d) *Taxpayer Identification Number (TIN):* _____

☐ TIN has been applied for.

☐ TIN is not required, because:

☐ Offeror is a nonresident alien, foreign corporation or foreign partnership that does not have income effectively connected with the conduct of a trade or business in the United States and does not have an office or place of business or a fiscal paying agent in the United States;

☐ Offeror is an agency or instrumentality of a foreign government;

☐ Offeror is an agency or instrumentality of the federal government.

(e) *Type of organization:*

- ☐ sole proprietorship;
- ☐ partnership;
- ☐ corporate entity (not tax-exempt);
- ☐ corporate entity (tax-exempt);
- ☐ government entity (federal, state or local);
- ☐ foreign government;
- ☐ international organization per 26 CFR 1.6049-4;
- ☐ other _____.

(f) *Contractor representations.*

The offeror represents as part of its offer that it is ☐ , is not, ☐ 51% owned and the management and daily operations are controlled by one or more members of the selected socio-economic group(s) below:

- ☐ Women Owned Business
- ☐ Minority Owned Business (if selected, then one sub-type is required)
 - ☐ Black American
 - ☐ Hispanic American
 - ☐ Native American (American Indians, Eskimos, Aleuts, or Native Hawaiians)
 - ☐ Asian-Pacific American (persons with origins from Burma, Thailand, Malaysia, Indonesia, Korea, The Philippines, U.S. Trust Territory of the Pacific Islands (Republic of Palau), Republic of the Marshall Islands, Federated States of Micronesia, the Commonwealth of the Northern Mariana Islands, Guam, Samoa, Macao, Hong Kong, Fiji, Tonga, Kiribati, Tuvalu, or Nauru)
 - ☐ Subcontinent Asian (Asian-Indian) American (persons with origins from India, Pakistan, Bangladesh, Sri Lanka, Bhutan, the Maldives Islands, or Nepal)
 - ☐ Individual/concern, other than one of the preceding.

(end)